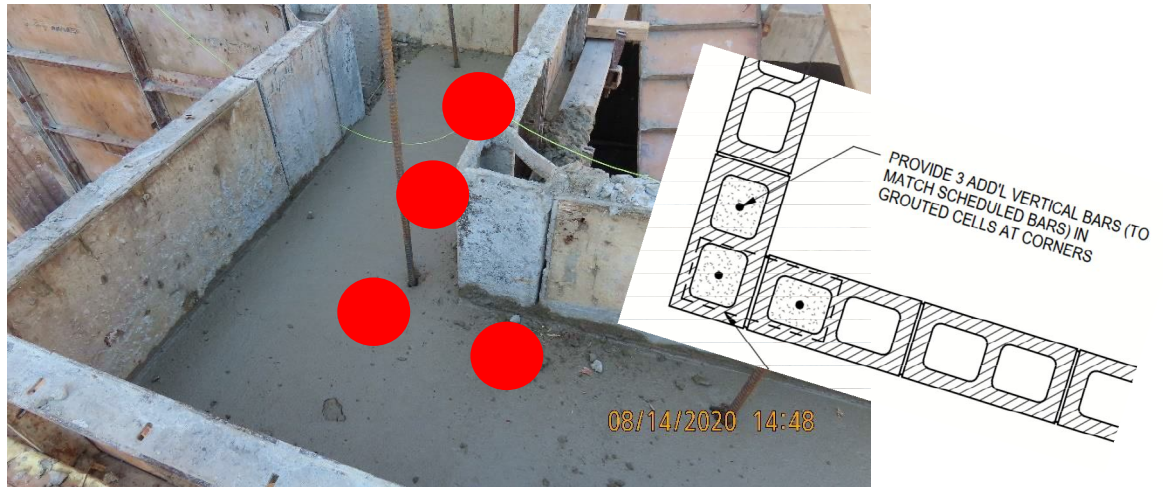




Masonry Rebar installed in Concrete... To be located correctly the first time!

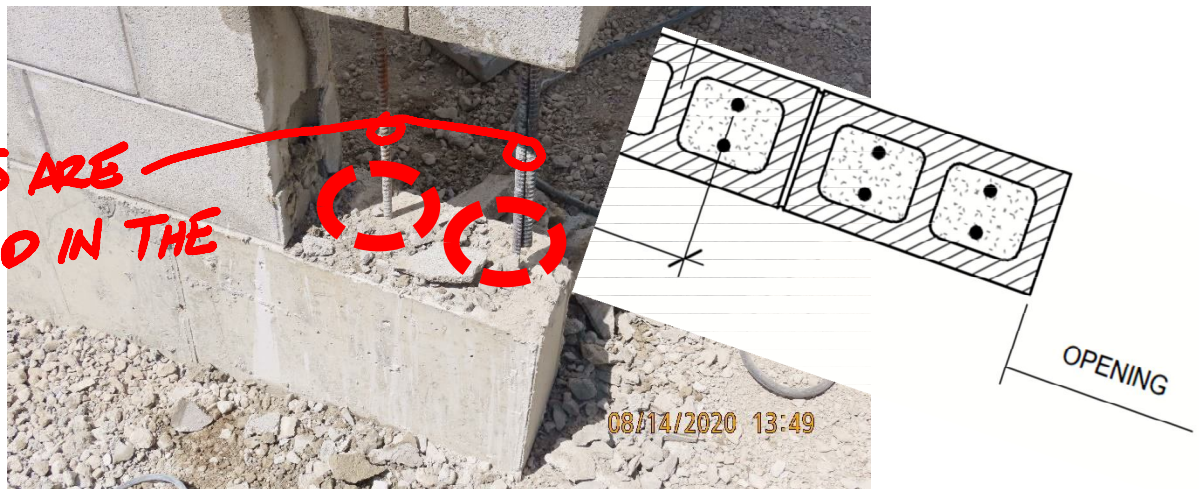
When installing masonry rebar, the Concrete Contractor must review the masonry details on the structural drawings and verify locations with the mason, including Control Joints, special conditions as identified, etc.

Consider using our Virtual Department to create augmented reality for exact placement of the rebar!



Missed and Mis-Located Masonry Rebar at the Corners

THESE BARS ARE ONLY LOCATED IN THE MORTAR...



Concrete Rebar was missed and NOT Installed in the concrete and the Mason did not post install them...

Both Contractors must work together – make sure that the Mason is able to locate Control Joints...

...Have the Concrete & Masonry Contractor Sign-Off on location and installation of the rebar...

RFI Structural Engineer for a detail on missed rebar

